

loungelovers

ASSEMBLY INSTRUCTIONS

Abode Recliner RH Chaise + Armless + LH 1 Arm Electric motion

Please read these instructions carefully and follow each step to ensure you assemble your sofa correctly. This will help avoid any damage to your new item or to your personal property. Check that all parts and hardware have been provided before assembling the product. Place all contents on a clean, soft, and flat surface to avoid scratching the components.

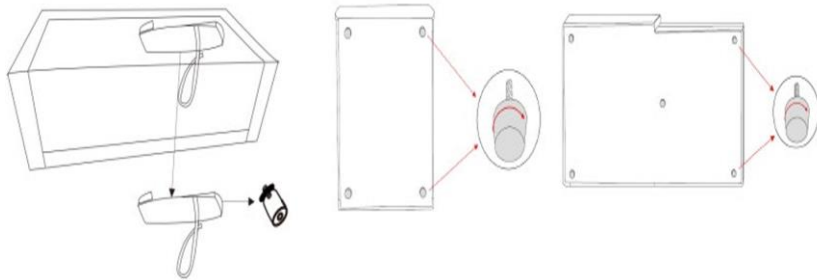


CAUTION:

Do not attempt to assemble or lift this product with only one person. Please use two people for your safety.



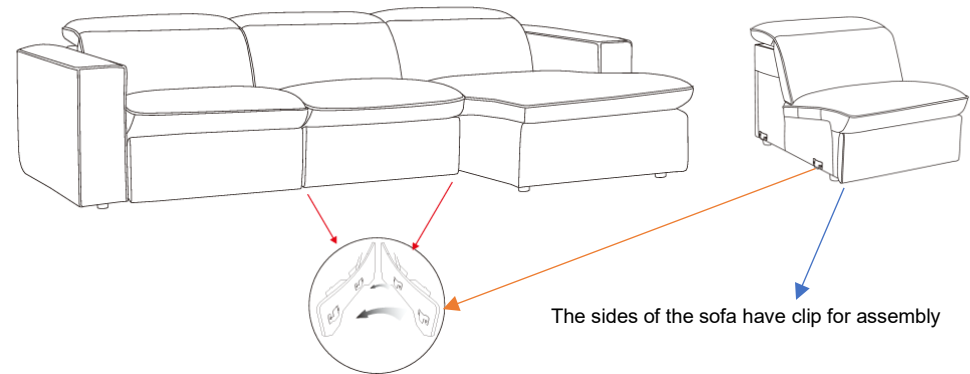
STEP 1:



Taking the parts from carton package and remove legs pack, Tighten legs to 80% to start.

When all parts have been assembled, you may fully tighten the hardware. To prevent damage to screw threads, do not use a power tool and do not over-tighten bolts. use a power tool and do not over-tighten bolts.

STEP 2:



Gently flip over sofas. it is important that you do Not roll the sofa onto the legs as this will weaken the structure.

Please read these instructions carefully and follow each step to ensure you assemble your sofa correctly. This will help avoid any damage to your new item or to your personal property.

loungelovers

ASSEMBLY INSTRUCTIONS

Abode Recliner RH Chaise + Armless + LH 1 Arm Electric motion

Please read these instructions carefully and follow each step to ensure you assemble your sofa correctly. This will help avoid any damage to your new item or to your personal property. Check that all parts and hardware have been provided before assembling the product. Place all contents on a clean, soft, and flat surface to avoid scratching the components.

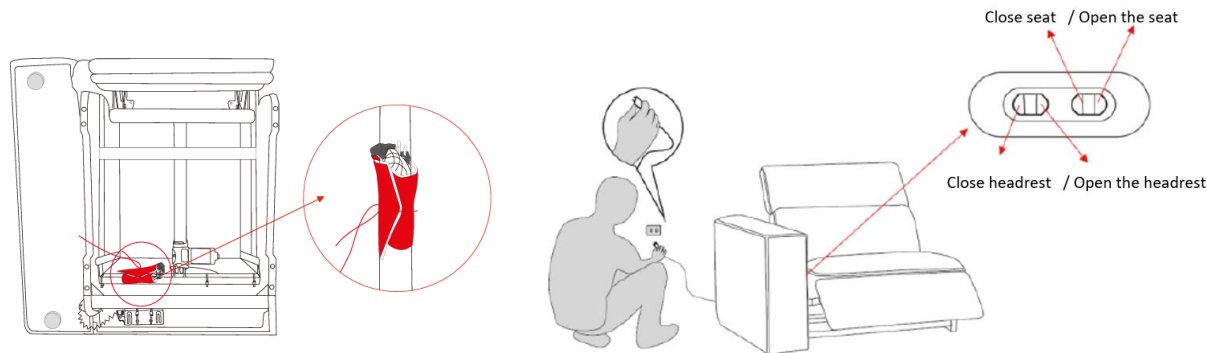


CAUTION:

Do not attempt to assemble or lift this product with only one person. Please use two people for your safety.

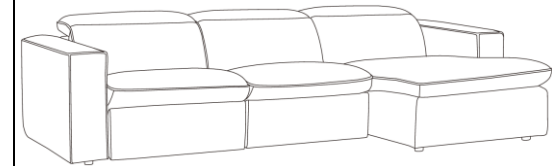


STEP3: Sofa Function



1. The power cord of the functional sofa is tied to the bottom mechanism. Please untie the power cord, then plug the power cord into the socket.
2. There are two groups of buttons on the side of seat, pressing the first one can open and close the seat, pressing the second one can open and close the headrest.

STEP4: Assembly is now complete.



Please read these instructions carefully and follow each step to ensure you assemble your sofa correctly. This will help avoid any damage to your new item or to your personal property.